

**CERTIFIED LAND CORNER RECORDATION**

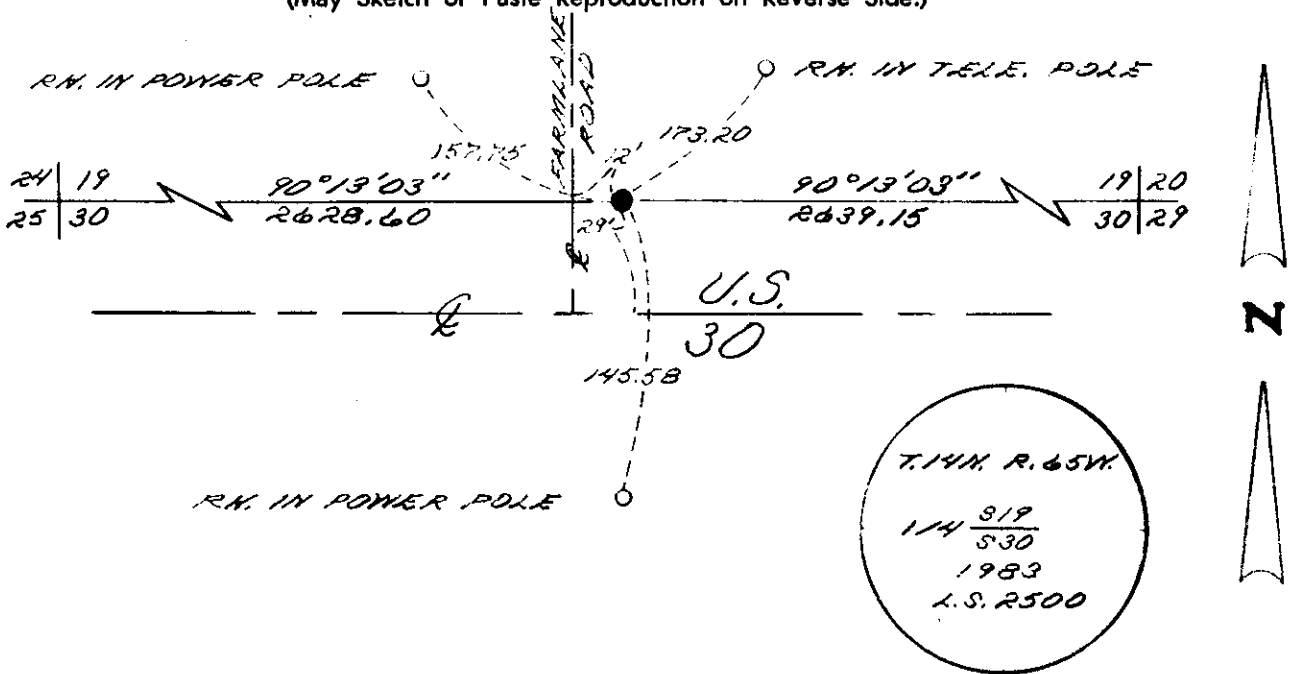
**DESCRIPTION OF CORNER EVIDENCE FOUND, AND ORIGINAL RECORD (if known)**

FOUND: NO EVIDENCE OF PREVIOUS MONUMENTATION  
 SET AT PROPORTIONATE DISTANCE, MONUMENT DESCRIBED AS  
 FOLLOWING: 18" LONG REBAR W/ 2" ALUMINUM CAP. 0.2'  
 BELOW SURFACE, MARKED AS SHOWN BELOW  
 T. 14 N.  
 19/30 1/4  
 R. 65 W.

**DESCRIPTION OF MONUMENT AND ACCESSORIES ESTABLISHED TO PERPETUATE THE ORIGINAL LOCATION OF THIS CORNER:**

SEE TIES BELOW

**SKETCH, WITH COURSE AND DISTANCE TO ADJACENT CORNER IF DETERMINED IN THIS SURVEY. (May Sketch or Paste Reproduction on Reverse Side.)**



I, JOHN A. STEIL certify that I have carefully performed or reviewed the work done on the diagrammed corner as reported on this recordation form and approve the same.

*John A. Steil*  
 Signature of Surveyor L.S. 2500  
 Registration No.

STATE OF WYOMING,  
 Office of Clerk and Recorder,  
 County of Taramie

740806

This "corner record" was filed for record on the APR 12 1984 day of 19, was noted on the cross-index plat and is assigned page No. \_\_\_\_\_, in book No. \_\_\_\_\_.

	County Official			
Cross Index No. <u>R-3</u>	T. <u>14 N.</u>	R. <u>65 W.</u>	Mer. <u>6 1/4</u>	
_____	T. _____	R. _____	Mer. _____	
_____	T. _____	R. _____	Mer. _____	
_____	T. _____	R. _____	Mer. _____	
_____	T. _____	R. _____	Mer. _____	
_____	T. _____	R. _____	Mer. _____	
_____	T. _____	R. _____	Mer. _____	

R3 14/65

